

CONTRACT NO. B-13965

INDEX					
PROJECT	STRUCTURE	TYPE	SPAN	OVER	STATION
MARS-3234 (3)	26-34-3105 A	NEW DECK AND WIDENING	1@35'-0"	HONEY CREEK	53+15
SHEET NO.	SHEET DESIGNATION	SUBJECT			F.H.W.A. APPROVAL
1		TITLE SHEET AND INDEX			
2		LAYOUT			
3	R1	GENERAL PLAN			
4-5	R2-R3	DETAILS			
6	R4	SUPERSTRUCTURE			
7	R5	SUMMARY			
8		PROFILE			
9-10		SECTIONS			

STATE OF INDIANA
INDIANA STATE HIGHWAY COMMISSION

BRIDGE PLANS FOR SPANS OVER 20 FEET ON STATE ROAD NO. 26 PROJECT MARS-3234 (3)

NEW DECK AND WIDENING FOR BRIDGE ON S.R. 26 OVER HONEY CREEK
ALL IN SECTION 23 & 26, T.23N., R.2E., IN HOWARD COUNTY
APPROXIMATELY 7.92 MILES WEST OF U.S. 31, LOG MILE 1.63

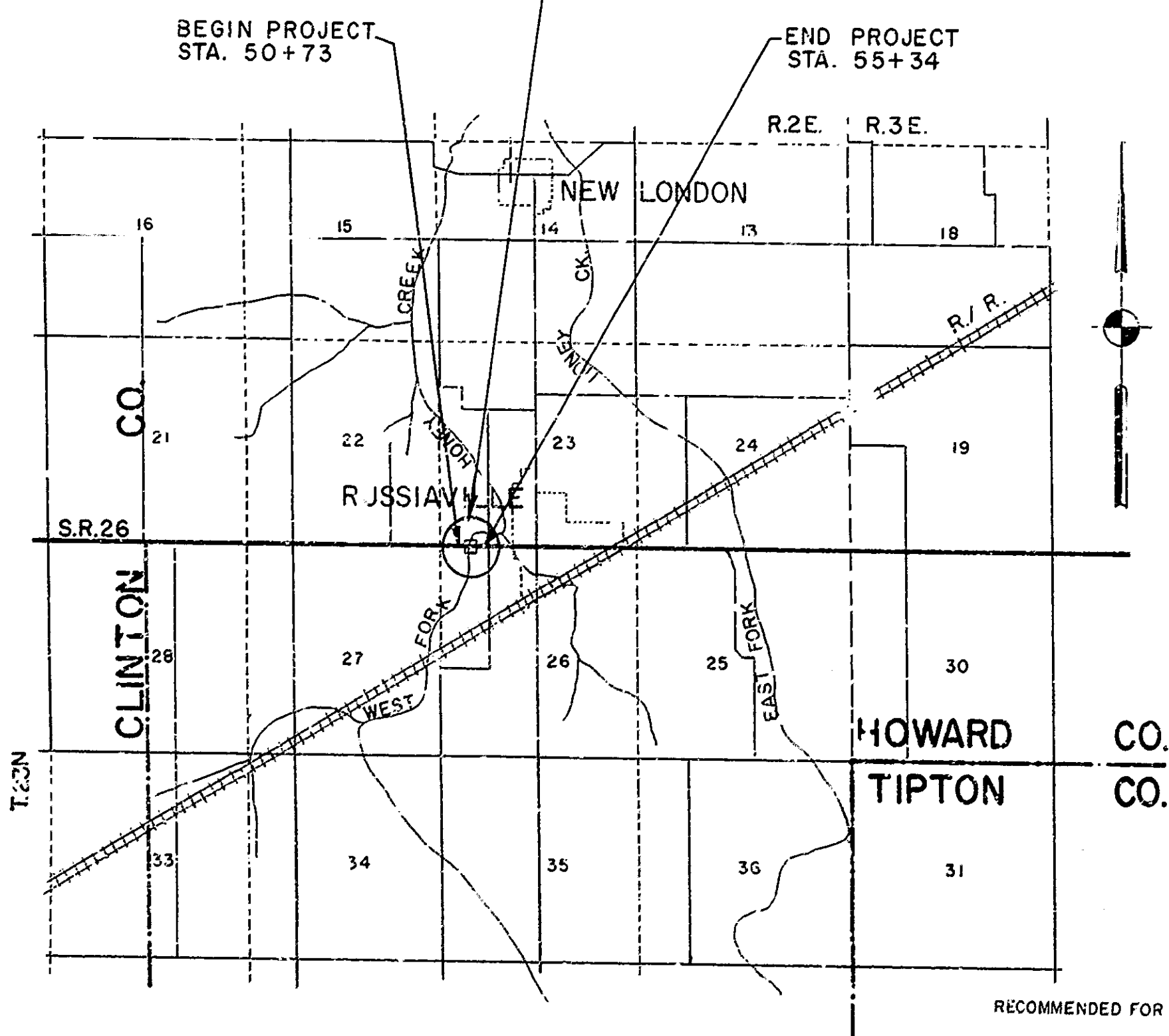
NOTE:-
WHENEVER SR-3234 (3) APPEARS
IN THESE PLANS OR CONTRACT
DOCUMENTS IT SHALL BE
INTERPRETED AS MARS-3234 (3)

STRUCTURE: 26-34-3105 A
NEW DECK & WIDENING
FOR PRESENT STRUCTURE: 26-6-3105

TRAFFIC DATA			
A.D.T. (19)	3,100		V.P.D.
A.D.T. (19 PROJECTED)			V.P.D.
D.H.V. (19 PROJECTED)			V.P.D.
TRUCKS		D.H.V. %	A.D.T. %
DESIGN SPEED			M.P.H.
ACCESS CONTROL			

PLANS PREPARED BY:
FLOYD E. BURROUGHS & ASSOC., INC.
CONSULTING ENGINEERS
INDIANAPOLIS, INDIANA
CERTIFIED *William M. Ryan* DATE *January 9, 1981*

NOTE:-
WHEREVER "INDIANA STATE HIGHWAY COMMISSION" APPEARS IN THESE PLANS, IT SHALL BE INTERPRETED AS "INDIANA DEPARTMENT OF HIGHWAYS" EXCEPT THE 1978 INDIANA STATE HIGHWAY COMMISSION SPECIFICATIONS SHALL BE USED.



FEDERAL REGION NO.	STATE	PROJECT NO.	FISCAL YEAR	SHEET NO.	TOTAL SHEETS
5	IND.		1980	1	23

INDEX CONTINUED				
SHEET NO.	SHEET DESIGNATION	SUBJECT	F.H.W.A. APPROVAL	ADOPTED REVISION #
11	BRIDGE STD. BR1	ALUMINUM BRIDGE RAILING		
12	BRIDGE STD. BR2	ALUMINUM BRIDGE RAILING DETAILS		11-3-80
	BRIDGE STD. BR3	STEEL BRIDGE RAILING		R12-1-78
	BRIDGE STD. BR4	STEEL BRIDGE RAILING DETAILS		
	BRIDGE STD. BR5	RAILING CONNECTION DETAILS		
	BRIDGE STD. BR6	RAILING CONNECTION DETAILS		
13	BRIDGE STD. C1	MISCELLANEOUS DETAILS		R-12-7-81
	BRIDGE STD. C2	MISCELLANEOUS DETAILS		
14	BRIDGE STD. C3	MISCELLANEOUS DETAILS		R-12-7-81
	BRIDGE STD. C4	MISCELLANEOUS DETAILS		
	BRIDGE STD. D	CASTING DETAILS ROADWAY DRAINS		
	BRIDGE STD.			
	BRIDGE STD. PB	PRESTRESSED CONCRETE TYPE I-BEAMS		
	BRIDGE STD. PB	PRESTRESSED CONCRETE TYPE I-BEAMS		
	BRIDGE STD. PB6	PRESTRESSED BOX BEAMS		
	BRIDGE STD. PB	PRESTRESSED COMPOSITE BOX BEAMS WIDE		
	BRIDGE STD. PB	PRESTRESSED COMPOSITE BOX BEAMS WIDE		
	BRIDGE STD. PB10	TOLERANCES FOR FABRICATION OF PRESTRESSED BEAMS		
	BRIDGE STD. PB11	ELASTOMERIC BEARING PAD DETAILS		
	BRIDGE STD.			
	BRIDGE STD.			
	BRIDGE STD. R2A	BRIDGE LIGHTING DETAILS		
	BRIDGE STD. R2B			
	BRIDGE STD. S1	MISCELLANEOUS DETAILS		
	BRIDGE STD. SH1	STEEL SHOE DETAILS		
	BRIDGE STD. T SHEET A	STANDARD TEMPORARY BRIDGE		
	BRIDGE STD. T SHEET B	STANDARD TEMPORARY BRIDGE		
	BRIDGE STD.			
	BRIDGE STD.			
	BRIDGE STD.			
	BRIDGE STD.			
	BRIDGE STD.			
	ROAD STD. SHEET A	STANDARD PAVEMENT JOINTS		
	ROAD STD. SHEET B	STANDARD PAVEMENT JOINTS		
	ROAD STD. SHEET NA	MISCELLANEOUS STANDARDS		
	ROAD STD. SHEET NA	MISCELLANEOUS STANDARDS		
	ROAD STD. SHEET NB	MISCELLANEOUS STANDARDS		
	ROAD STD. SHEET NB2	MISCELLANEOUS STANDARDS		
	ROAD STD. SHEET	MISCELLANEOUS STANDARDS		
	ROAD STD. SHEET NC	MISCELLANEOUS STANDARDS		
	ROAD STD. SHEET MC1	MISCELLANEOUS STANDARDS		
	ROAD STD. SHEET MD	MISCELLANEOUS STANDARDS		
	ROAD STD. SHEET MD	MISCELLANEOUS STANDARDS		
	ROAD STD. SHEET MD	MISCELLANEOUS STANDARDS		
	ROAD STD. SHEET ME	MISCELLANEOUS STANDARDS		
	ROAD STD. SHEET ME	MISCELLANEOUS STANDARDS		
	ROAD STD. SHEET	MISCELLANEOUS STANDARDS		
	ROAD STD. SHEET MH	MISCELLANEOUS STANDARDS		
	ROAD STD. SHEET MH	MISCELLANEOUS STANDARDS		
	ROAD STD. SHEET MI	MISCELLANEOUS STANDARDS		
	ROAD STD. SHEET	MISCELLANEOUS STANDARDS		
	ROAD STD. SHEET	MISCELLANEOUS STANDARDS		
	ROAD STD. SHEET NH	MISCELLANEOUS STANDARDS		
	ROAD STD. SHEET	MISCELLANEOUS STANDARDS		
	ROAD STD. SHEET MP	MISCELLANEOUS STANDARDS		
	ROAD STD. SHEET	MISCELLANEOUS STANDARDS		
	ROAD STD. SHEET MC	MISCELLANEOUS STANDARDS		
	ROAD STD. SHEET MR	MISCELLANEOUS STANDARDS		
	ROAD STD. SHEET			
	ROAD STD.	STANDARD REINF. CONCRETE BOX CULVERTS		
	ROAD STD.	STANDARD REINF. CONCRETE CULVERTS		
15	ROAD STD. SHEET GR 4	GUARD RAIL CLASS GA		R-4-1-82
	ROAD STD. SHEET GR	GUARD RAIL CLASS		
	ROAD STD. SHEET GR	GUARD RAIL CLASS		
16	ROAD STD. SHEET GR5	ALUMINUM GUARD RAIL DETAILS		R-4-1-82
	ROAD STD. SHEET GR6	STEEL TUB. GUARD RAIL DETAILS		
	ROAD STD. SHEET GR			
17	ROAD STD. SHEET GR10	GUARD RAIL END TREATMENT TYPE T		R-4-1-82
18	ROAD STD. SHEET CB 2	TEMPORARY CONCRETE BARRIER		R-4-1-81
19	ROAD STD. SHEET D	TRAFFIC SIGN DETAILS		R-4-1-79
20	ROAD STD. SHEET 1 DETOURS	STANDARD DETOUR SIGNS		R-4-1-82
	ROAD STD. SHEET 1A DETOURS	STANDARD DETOUR SIGNS		
	ROAD STD. SHEET 1B DETOURS	STANDARD DETOUR SIGNS		
	ROAD STD. SHEET 2 DETOURS	STANDARD DETOUR SIGNS		
21	ROAD STD. SHEET 2A DETOURS	STANDARD DETOUR SIGNS		P-9-1-82
22	ROAD STD. SHEET 3 DETOURS	STANDARD DETOUR SIGNS		R-7-1-82
	ROAD STD. SHEET 3A DETOURS	STANDARD DETOUR SIGNS		
	ROAD STD. SHEET 4 DETOURS	STANDARD DETOUR SIGNS		
23	ROAD STD. SHEET 5 DETOURS	STANDARD DETOUR SIGNS		R-10-1-82
	ROAD STD. SHEET 5A DETOURS	STANDARD DETOUR SIGNS		

RECOMMENDED FOR APPROVAL

ASSISTANT ENGINEER OF BRIDGE DESIGN,
INDIANA STATE HIGHWAY COMMISSION

RECOMMENDED FOR APPROVAL

MEMBER OF BRIDGE DESIGN, INDIANA STATE HIGHWAY COMMISSION

APPROVED

CHIEF HIGHWAY ENGINEER—INDIANA STATE HIGHWAY COMMISSION

FEDERAL HIGHWAY ADMINISTRATION
DEPARTMENT OF TRANSPORTATION

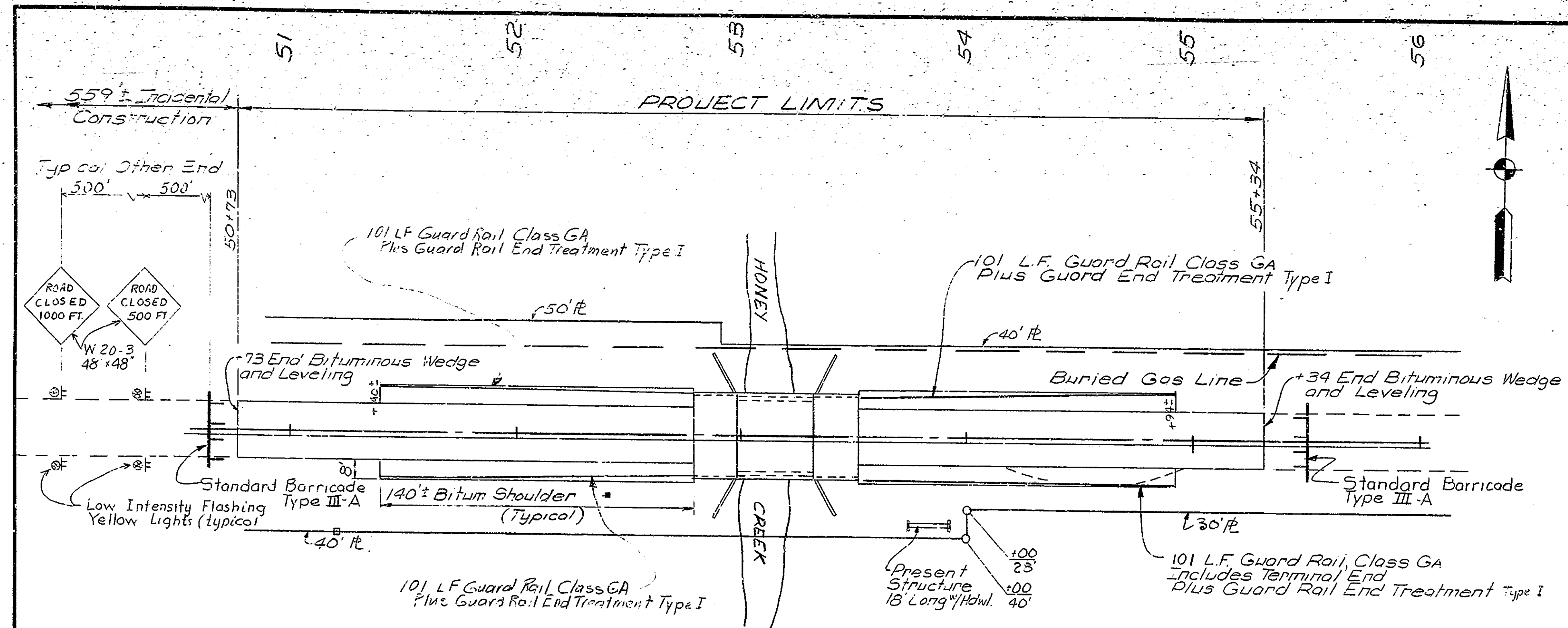
APPROVED:

DIVISION ADMINISTRATOR DATE

INDIANA STATE HIGHWAY COMMISSION
STANDARD SPECIFICATIONS DATED 1978
TO BE USED WITH THESE PLANS.

REVISIONS	
DATE	SHEET NO.

REVISIONS	
DATE	SHEET NO.
3-16-81	1, 2
1-31-83	1, 2, 3, 7
3-23-83	1, 2, 7



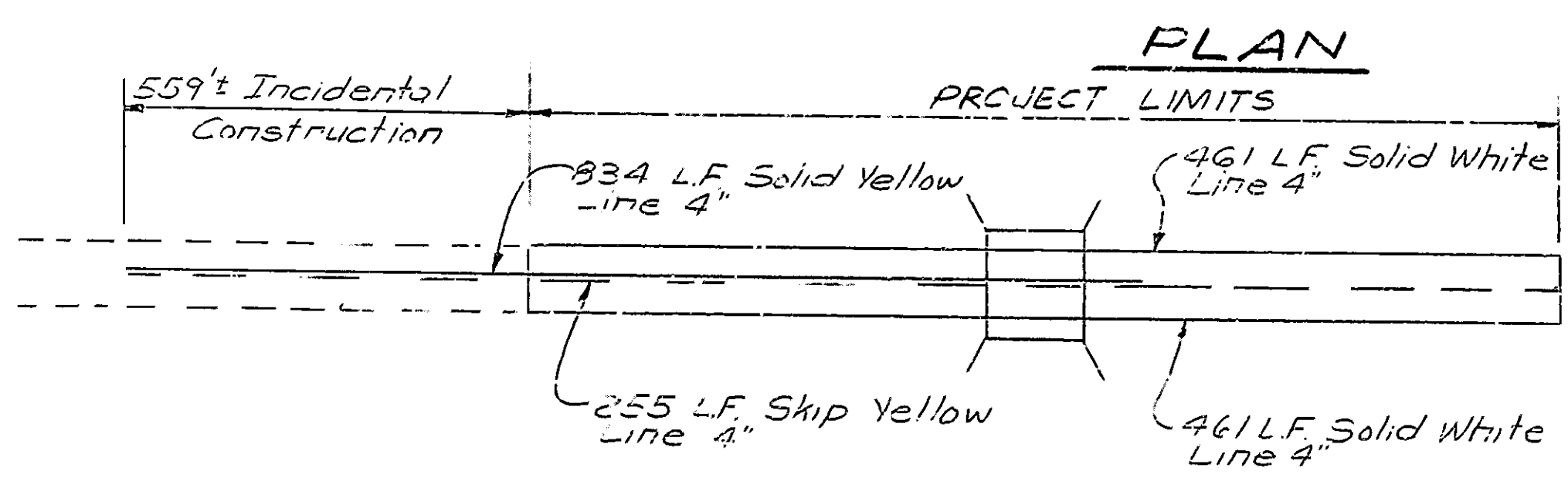
UTILITIES

Telephone: Indiana Bell Telephone Co.
220 North Meridian St. Rm. 1349
Indianapolis, Ind. 46204
Att. Mr. F.S. Kaiser

Power: Public Service Indiana
1000 East Main St.
Plainfield, Ind. 46168
Att. R.E. Lambert

Gas: Kokomo Gas and Fuel Co.
410 North Main St.
Kokomo, Indiana 46901

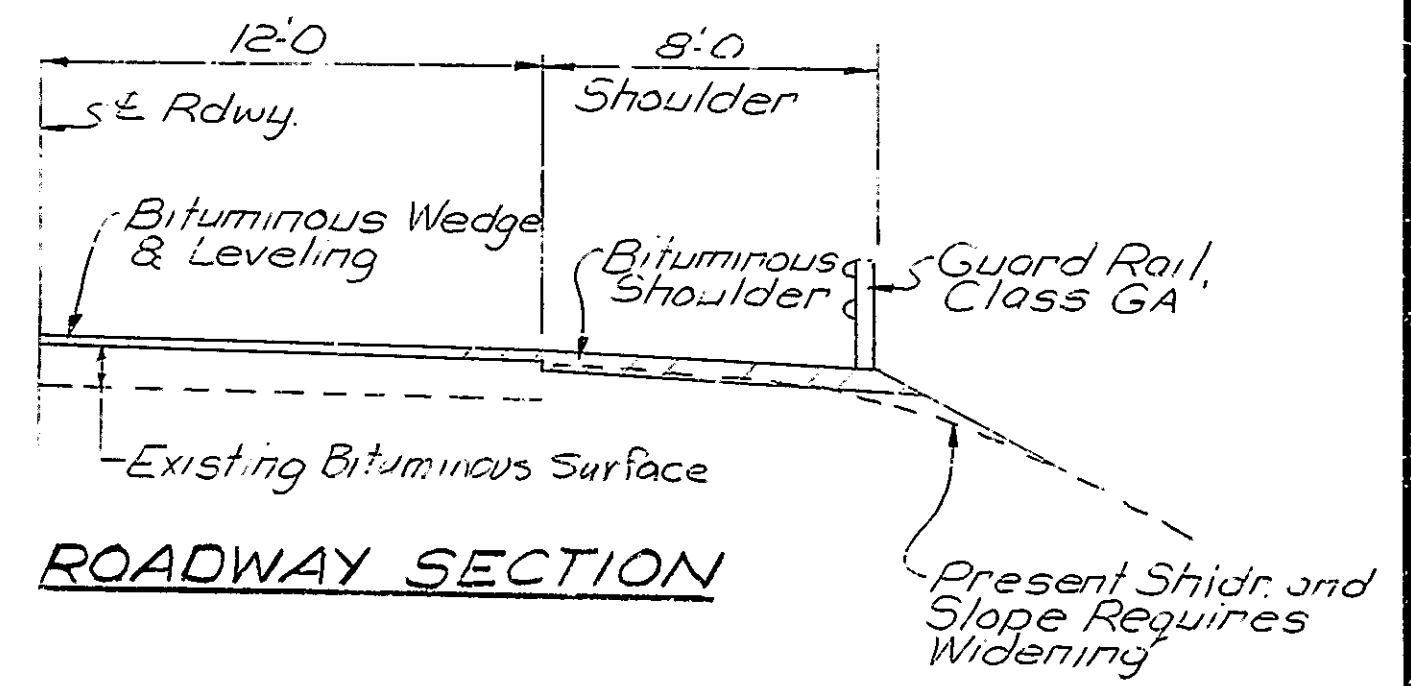
Telephone along North R/W
Power along South R/W



LINE DIAGRAM No Scale

GUARD RAIL SUMMARY

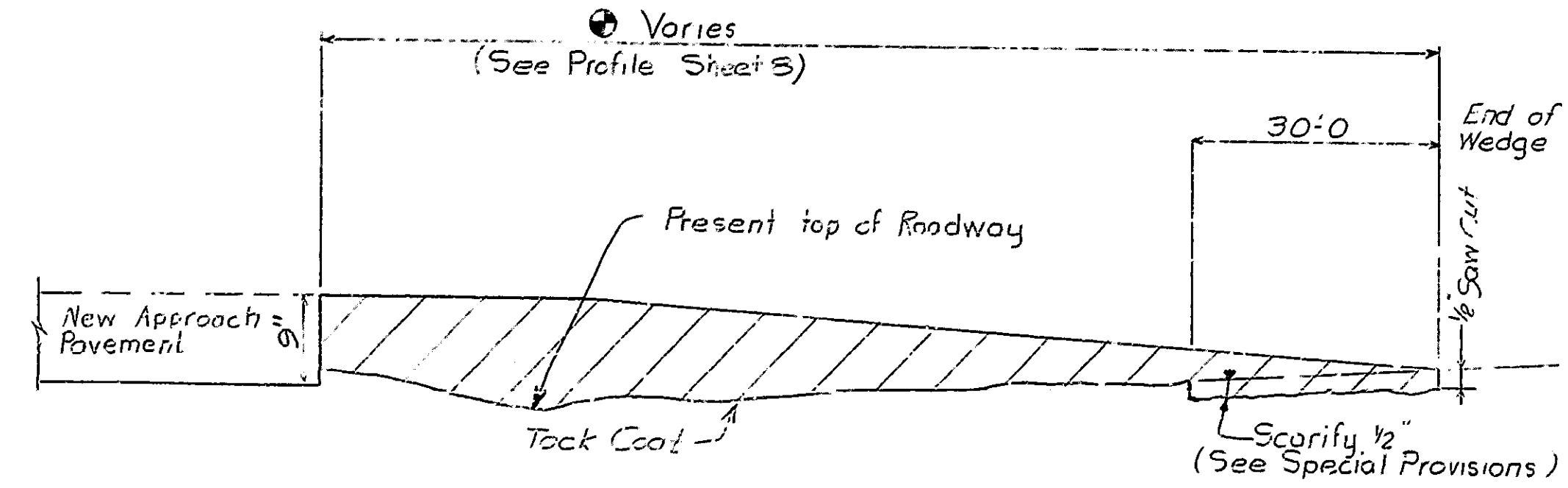
404 L.F. Guard Rail Class GA
4 EA. Guard Rail End Treatment Type I
560 L.F. Guard Rail Removal (Includes 4 End Treatments removals)



ROADWAY SECTION

SEPARATE PAY ITEMS

- 14 ea. Construction Signs (Type 'A')
- 2 ea. Construction Signs (Type 'B')
- 2 ea. Standard Barricades Type III-A
- 922 LF. Line Solid White 14"
- 834 LF. Line Solid Yellow 14"
- 255 LF. Line Skip Yellow 14"



BITUMINOUS WEDGE and LEVELING

Tack Coat to be paid for as Bituminous Material for Tack Coat in Square Yards.

The maximum depth of Bituminous Surface Type II B shall not exceed 1 1/2". At locations where the total wedge thickness will exceed 1 1/2", Bituminous Binder or Bituminous Base shall be placed as a first course to within one inch of finished grade.

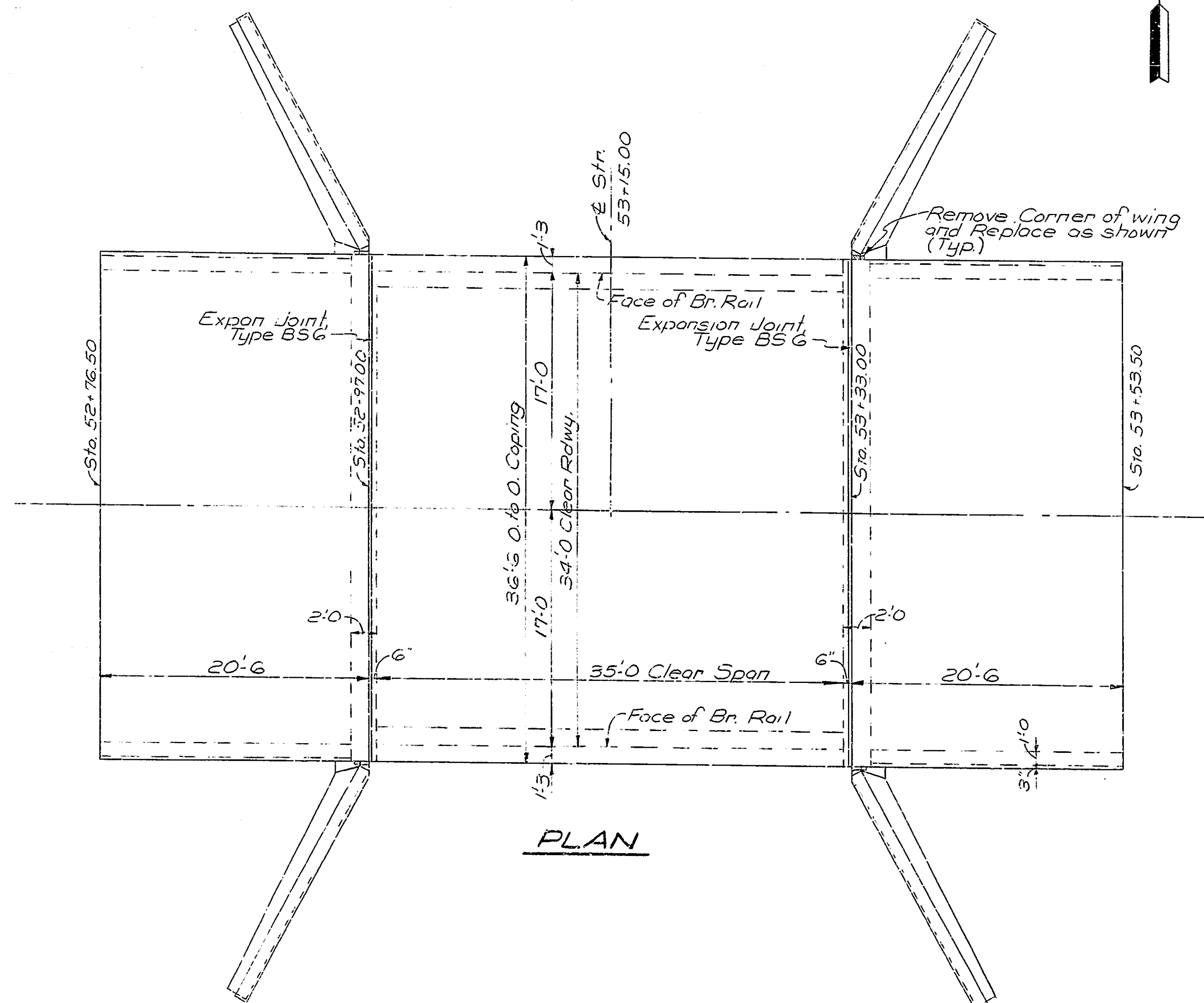
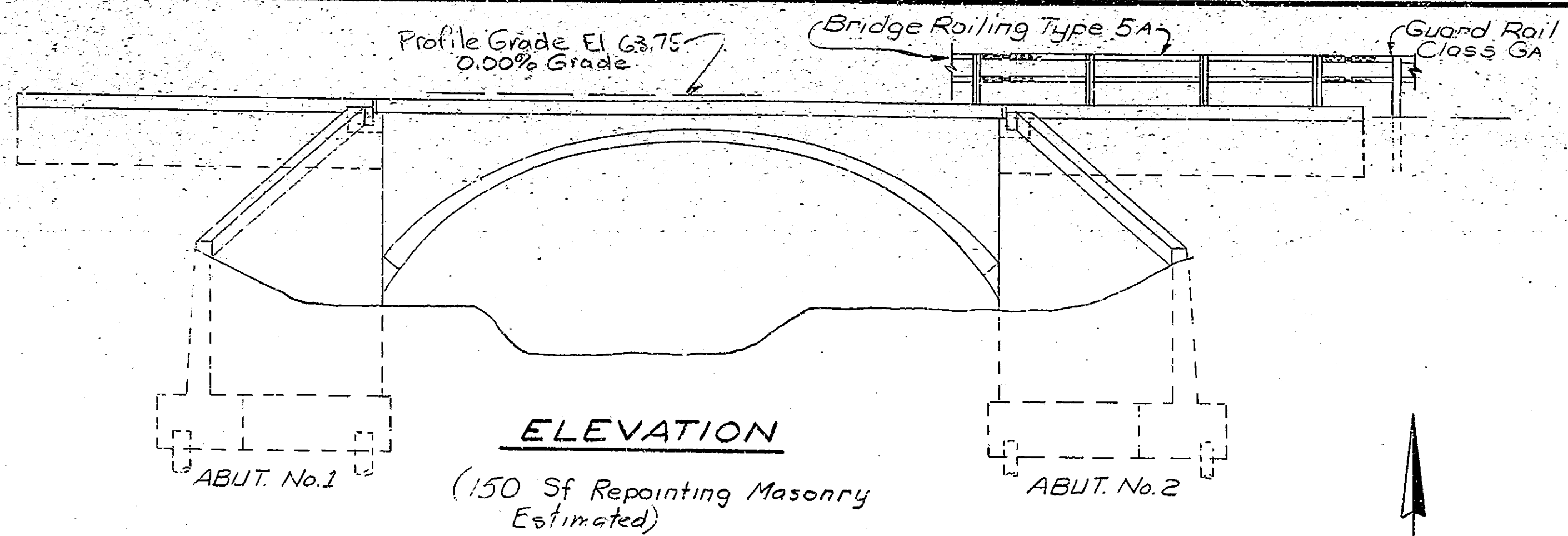
BRUNING 40-5253 24139-3

DESIGNED	C.K.D.
DRAWN	C.K.D.
TRACED	C.K.D.

Rev. 3-23-83 Guard Rail; Added Guard Rail Removal.
Rev. 1-31-83, G.R. Class GA, G.R. End Treatment Type I, C.I. Barricade Type III-A, Const Signs
Rev. 3-16-81 Change R/W to 12'

LAYOUT INDIANA STATE HIGHWAY COMMISSION

SCALE: 1"=30'-0" DATE: January 9, 1981
SUBMITTED FOR APPROVAL: *Walter M. ...*
DRAWING: OF SHEET: 2 OF 23
PROJECT: SR-3234 (3)
CONTRACT NO. B-13965
BRIDGE FILE: 26-34-3105 A



GENERAL NOTES

1. Plans for the existing structure are on file in the Central Office as Bridge File 26-G-3105 and are available on request.
2. Reinforcing steel covering shall be $2\frac{1}{2}$ " in top and 1" minimum in bottom of floor slab and 2" in all other parts unless noted.
3. For Reinforcing Bar Notes see Bridge Standard C1
4. Concrete in Superstructure and in R.C. Bridge Approach to be Class "C".
5. Concrete in spandrel walls, slab seat, and wingwalls to be Class "B".
6. Continuous concrete pours shall be required between construction joints as shown on the details.
7. Reinforcing in Deck Slab and Approach Slab to be epoxy coated.
8. Bevel forms $\frac{1}{4}$ " under copings and chamfer exposed edges 1 inch unless noted.
9. Surface seal all exposed areas of wingwalls, abutments, top of slab, coping to drip bead.
10. Where new work is to be fitted to old work, the Contractor shall check all dimensions and conditions in the field and report any errors or discrepancies to the Engineer and assume responsibility for their correctness and the fit of the new part to the old.
11. All bituminous material required in this contract to be included in the pay item "Bituminous Mixture for Approaches" except Tack Coat will be paid for separately.

STANDARD DRAWINGS

Br Std.	Rd Std.	PURPOSE
BR1		Type 5A Aluminum Rail
BR2		Aluminum Bridge Railing Details
C1		Reinforcing Bar Notes
C3		Construction Joint Type "A"
	GR4	Guard Rail Class GA
	GR5	Aluminum Guard Rail Details
	GR10	Guard Rail End Treatment Type I
	CB-2	Temporary Concrete Barrier
	Sht. 1	Standard Detour Signs
	Sht. 2A	Standard Detour Signs
	Sht. 3	Standard Detour Signs
	Sht. 5	Standard Detour Signs
	Sht. 9	Traffic Sign Details

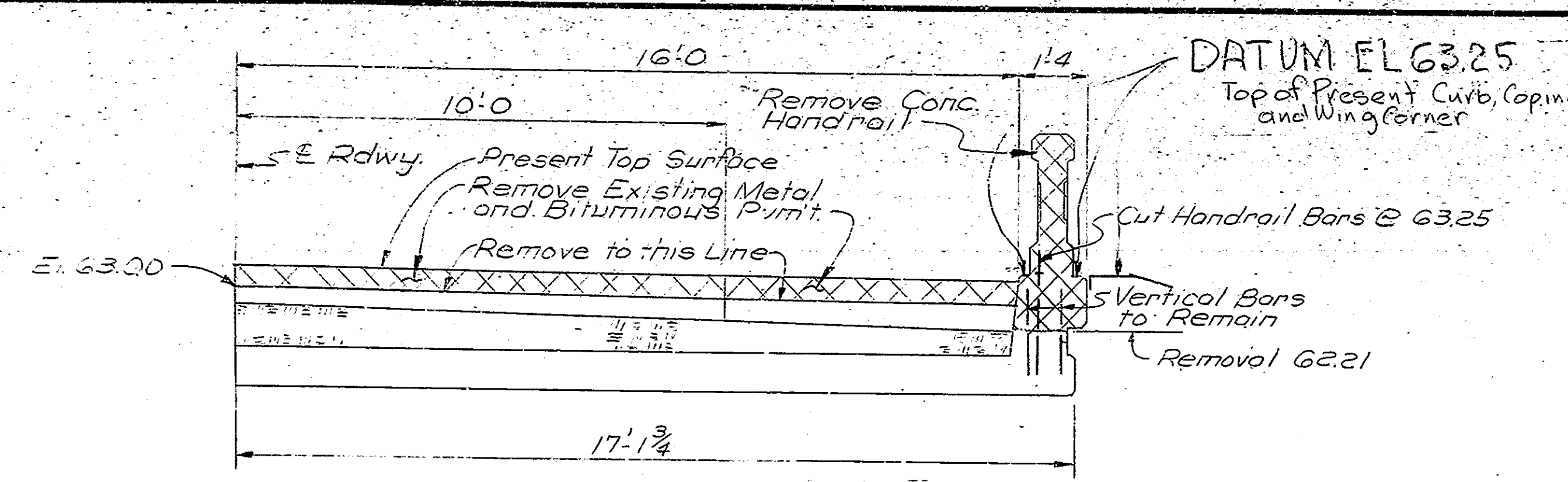
GENERAL PLAN
 NEW SLAB AND WIDENING
 REINFORCED CONCRETE BRIDGE
 1-SPAN @ 35'-0" 34'-0" CLEAR Rdwy
 OVER HONEY CREEK ON S. R. 26
INDIANA STATE HIGHWAY COMMISSION

DATUM EL 63.25
 Top of Present Curb, Coping, and Wing Corners
 See Sheet 4

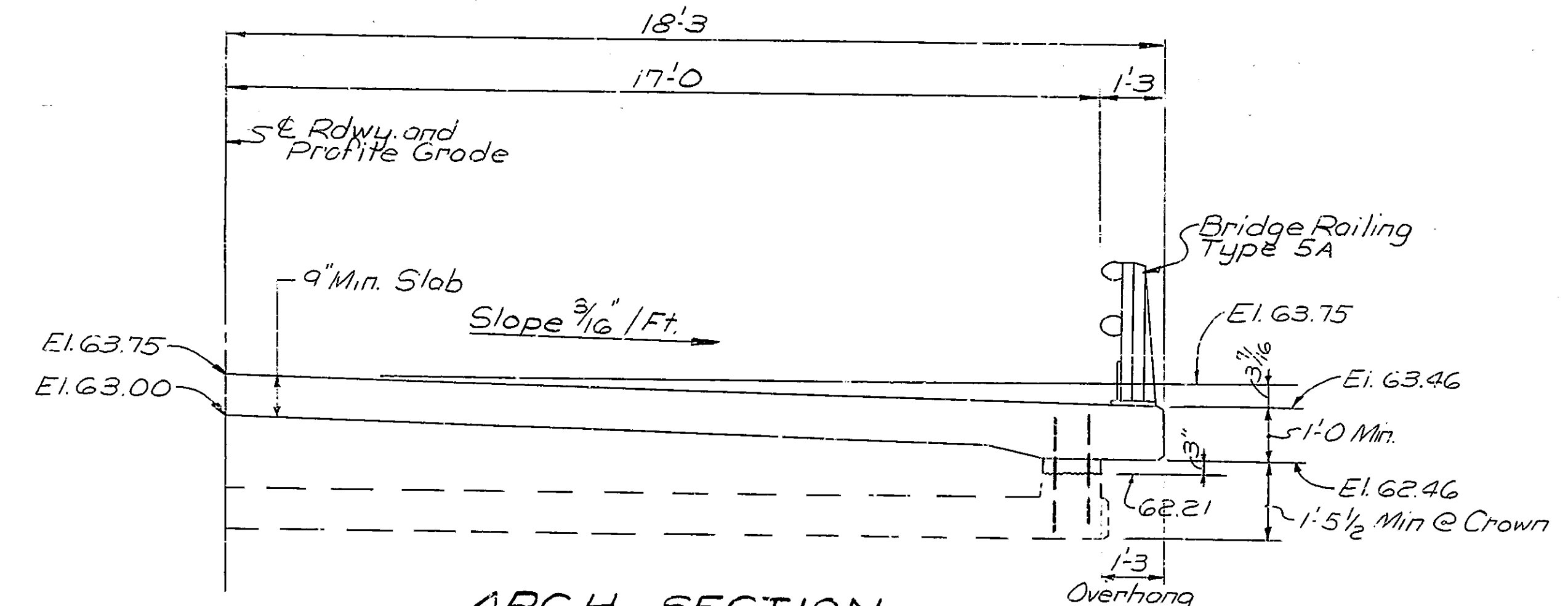
SCALE: $\frac{3}{16}'' = 1'-0''$ DATE: January 9, 1981
 SUBMITTED FOR APPROVAL: *Walter W. Bean*
 DRAWING: R1 OF 5 SHEET: 3 OF 23
 PROJECT: SR-3234 (3)
 CONTRACT NO. B-13-65
 BRIDGE FILE: 26-34-3105 A

DRAWING NO. 26-34-3105 A

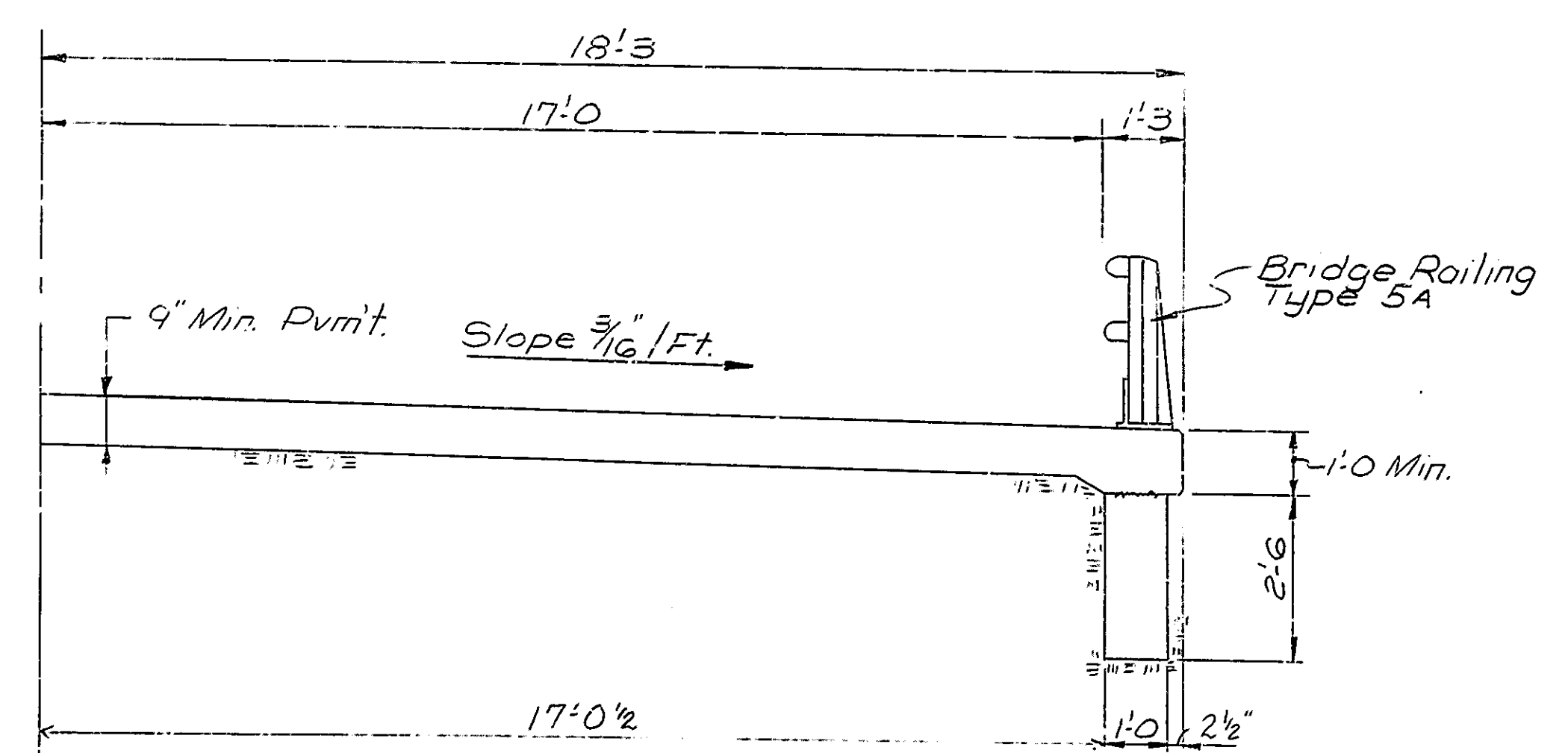
DESIGNED	CKD
DRAWN	CKD
TRACED	CKD



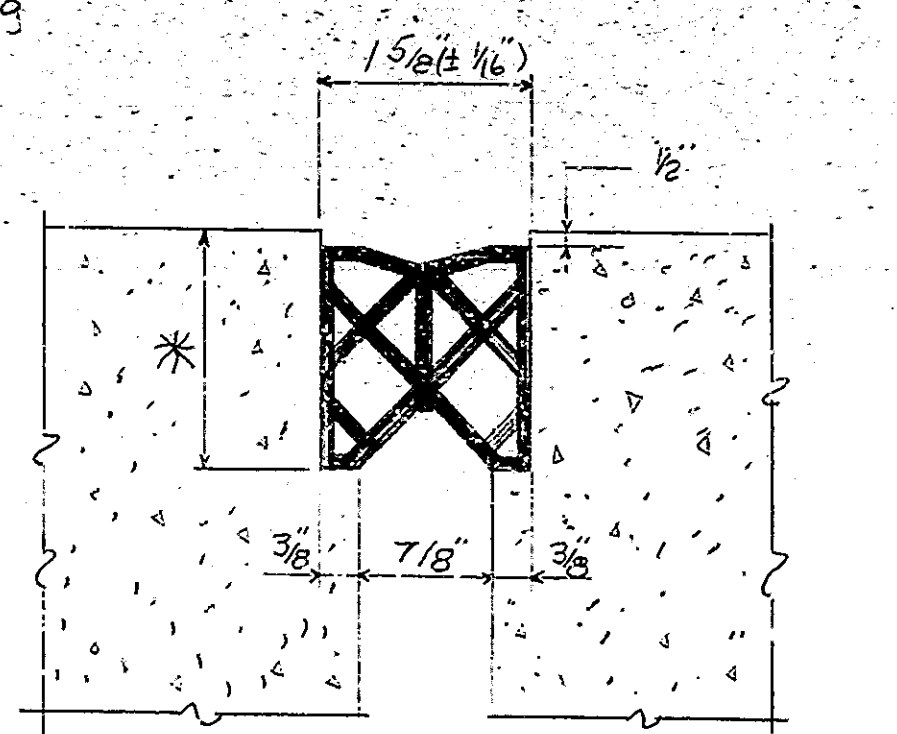
TYPICAL SECTION - REMOVAL



ARCH SECTION AT CROWN



APPROACH SECTION



EXPANSION JOINT TYPE BS 6
No Scale

* To be determined in the field, see the Special Provisions.

TRAFFIC PROCEDURE

Erect construction signs detour traffic, and close structure to traffic.

CONSTRUCTION PROCEDURE

1. Remove railing, curb, coping, portions of spandrel walls, and top corner of wingwalls as shown on details.
2. Reconstruct structure including deck slab, approach slab, and railing as shown on plans.
3. Construct bituminous wedge, bituminous shoulders and all other work shown on the plans including removal and installation of the guard rail.
4. All removal equipment used for partial concrete removals of bridge structures shall be hand held. Pneumatic hammers, 30 Lbs. maximum weight shall be used for all removal areas to be patched and all areas within 24 inches of full depth removal lines. Pneumatic hammers, up to 90 Lbs. maximum weight may be used for all other removals outside these limits. Deck areas that are to be removed full depth shall be completely separated from adjacent concrete before hammers heavier than 30 Lbs. may be used.

MATERIAL NOTES

- * * BITUMINOUS WEDGE & LEVELING
110 #/S.Y. Bituminous Surface Type 11B
OVER
Variable Depth Bituminous Binder or Bituminous Base
- BITUMINOUS SHOULDER
660 #/S.Y. Bituminous Base Type 5D
- * * The maximum depth of Bituminous Surface Type 11B shall not exceed 1/2".
At all locations where total wedge thickness will exceed 1/2", Bituminous Binder or Bituminous Base shall be placed as a first course to within one inch of finished grade.

**DETAILS
INDIANA STATE HIGHWAY COMMISSION**

SCALE: 1/2" = 1'-0" DATE: January 9, 1981

SUBMITTED FOR APPROVAL: *Walter M. Beaman*

DRAWING: R2 OF 5 SHEET: 4 OF 23

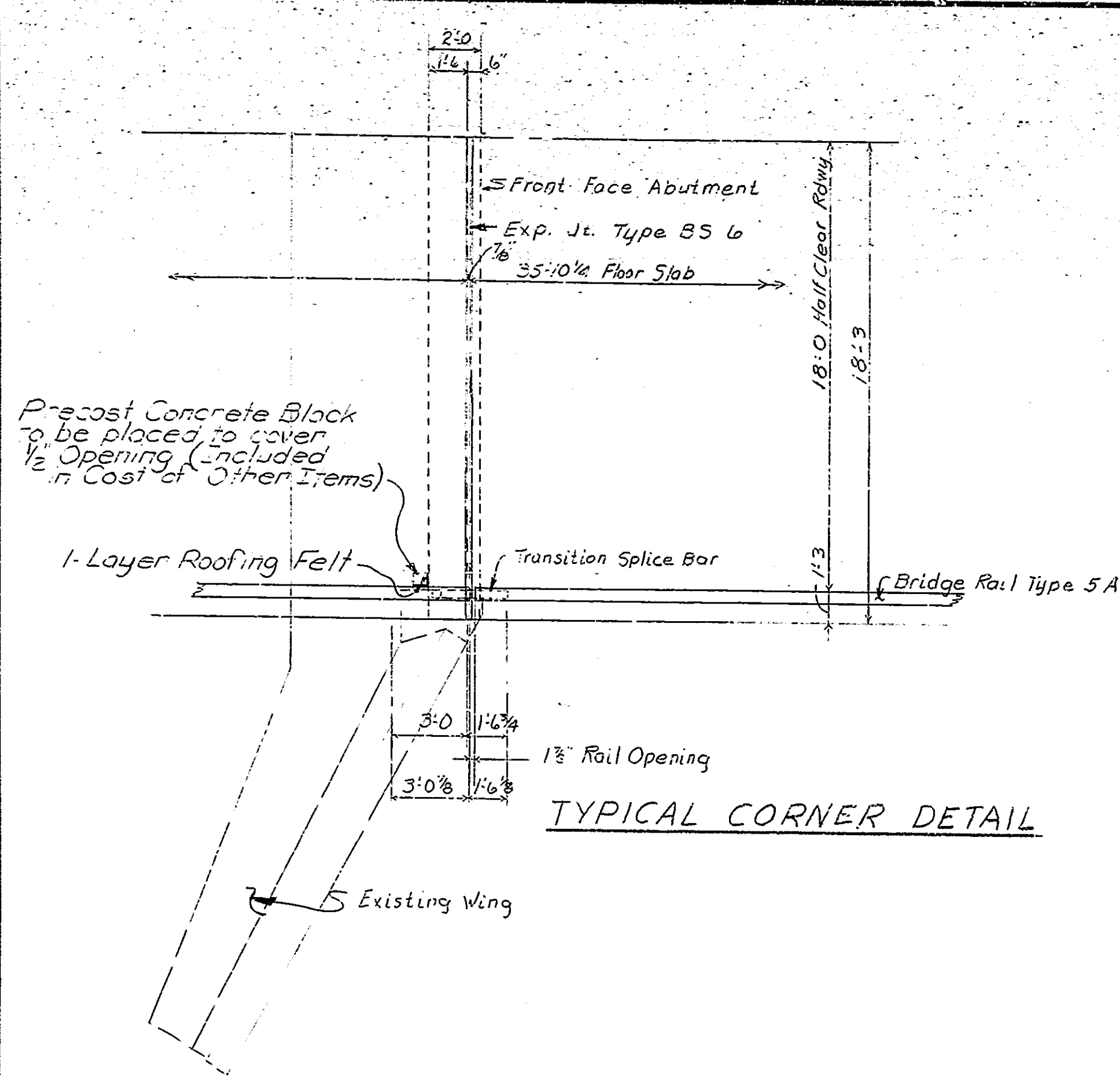
PROJECT: SR-3234(3)

CONTRACT NO. 3-13965

BRIDGE FILE: 26-34-3105A

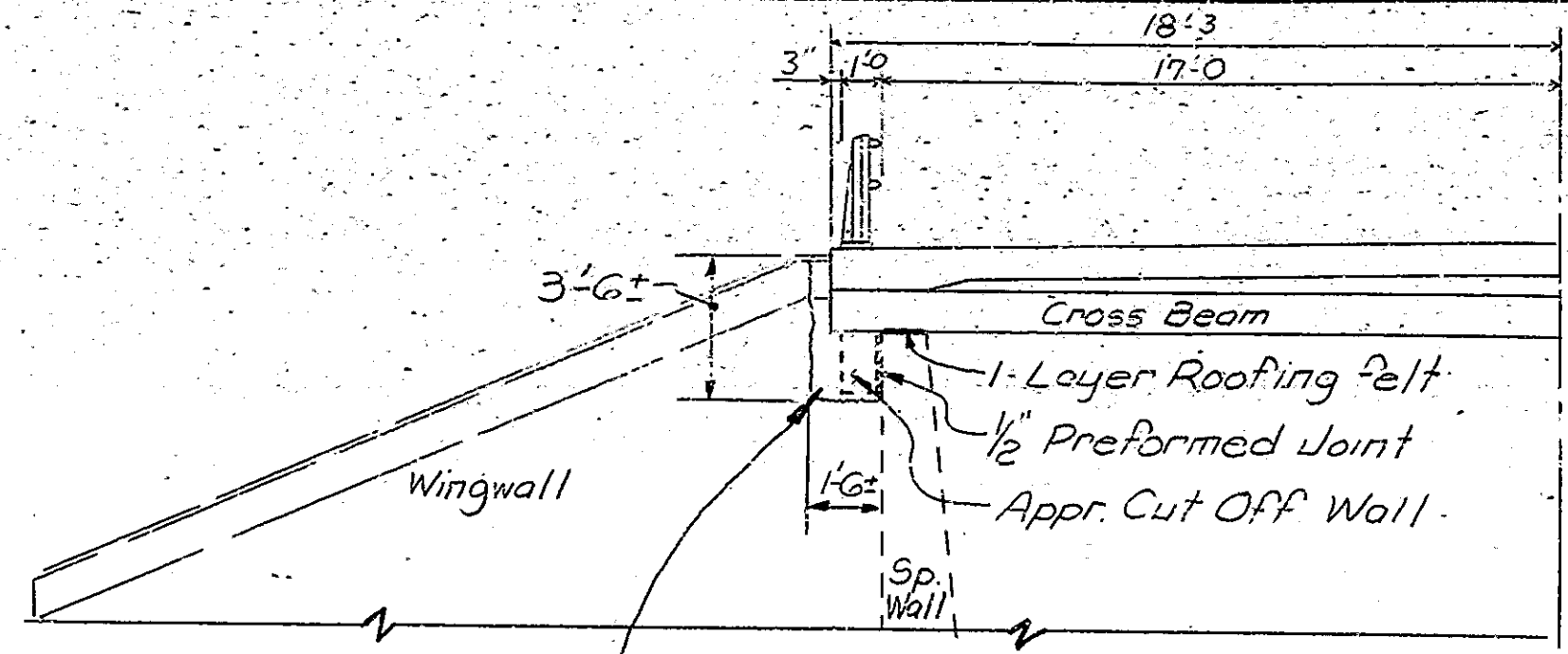
BRIMING 40-5253 2419-3

DESIGNED	CWK
DRAWN	CWK
TRACED	CWK

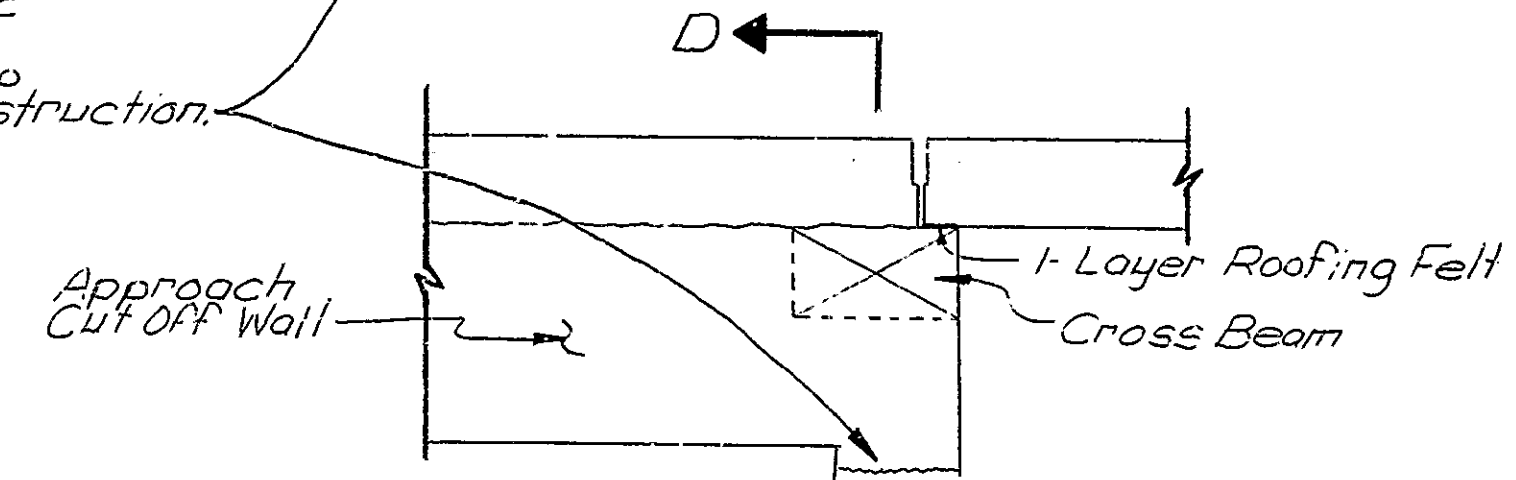


Pre-cast Concrete Block to be placed to cover 1/2 Opening (included in Cost of Other Items)

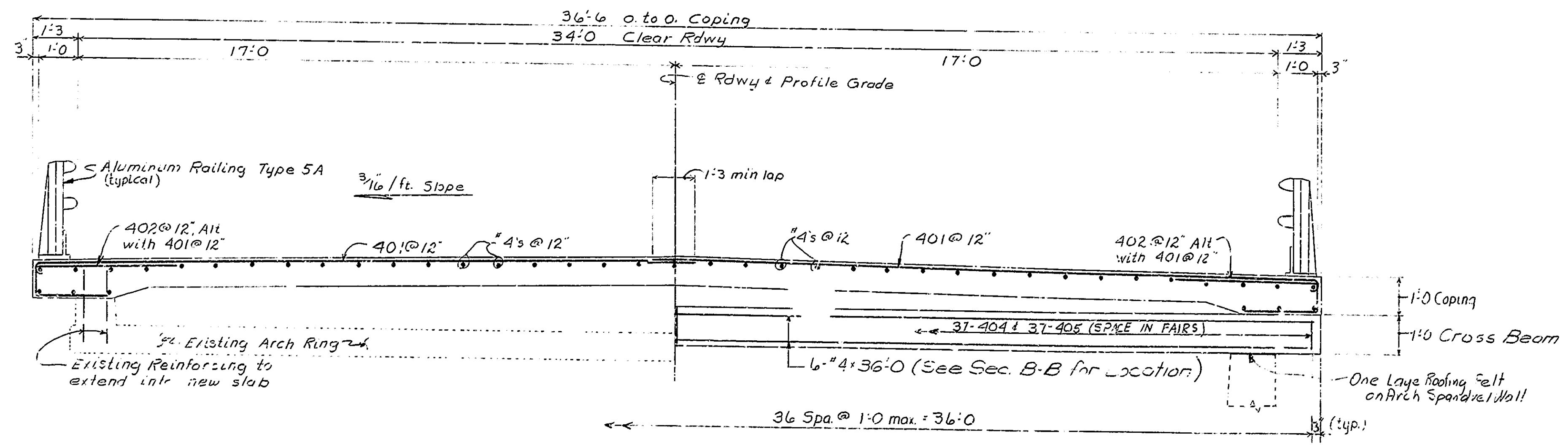
Cut out corner of wing to construct Approach Cut Off Wall and Cross Beam. Repair Wing Monolithic with New Construction. Existing Reinforcing to Extend into New Construction.



SECTION D-D
Scale 1/4"=1'-0"



ELEVATION



SECTION C-C
Scale 1/2"=1'-0"

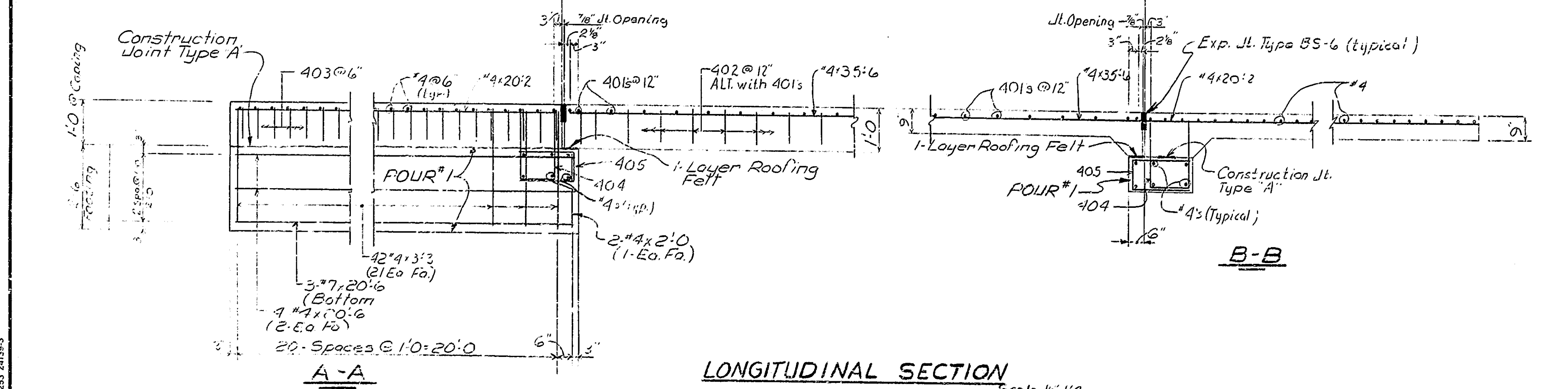
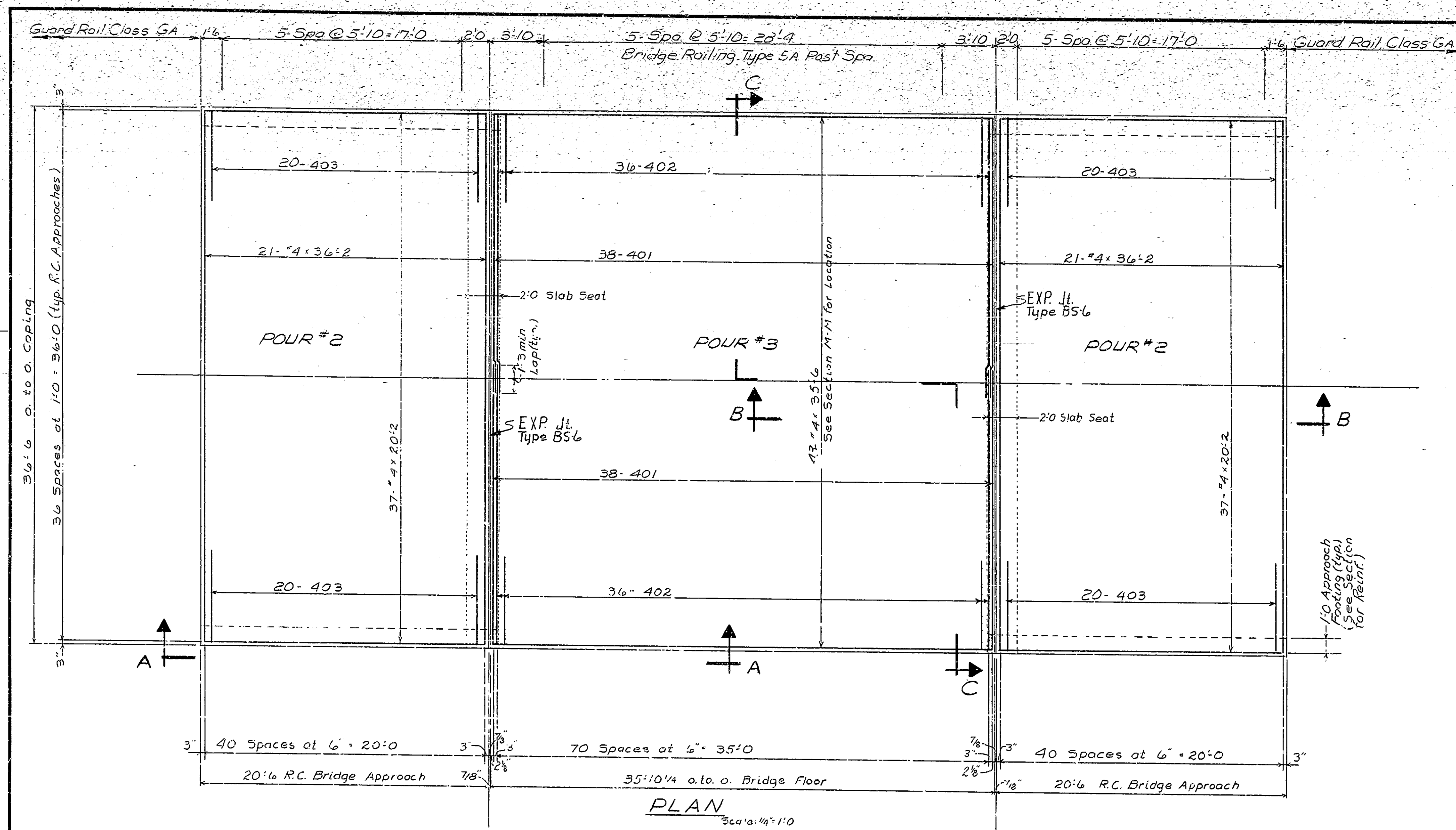
- 18:9
6" Hook
- 401 x 19:3
- 4:0
9"
1:9
402 x 6:6
- 5:0
9"
9"
403 x 6:6
- 1:3
1:8
1:1
404 x 4:6
- 1:6
6"
1:6
405 x 3:6

DETAILS
INDIANA STATE HIGHWAY COMMISSION

SCALE: As Noted
DATE: January 9, 1981
SUBMITTED FOR APPROVAL: *Walter M. Dean*
DRAWING: 23 OF 5 SHEET: 5 OF 23
PROJECT: SR-3234 (3)
CONTRACT NO. B-13965
BRIDGE FILE: 26-34-3105A

DESIGNED	CKD
DRAWN	CKD
TRACED	CKD

BRUNING 40-6255 24139-3



BILL OF MATERIALS

Epoxy Coated Reinforcing Stl			
Size or Mark	Number of Bars	Length (ft.)	Weight (lbs.)
7	12	20'6	
Total No 7			503
401	76	19'3	
402	72	6'6	
403	80	6'6	
404	37	4'6	
405	37	3'6	
4	42	36'2	
4	12	36'0	
4	43	35'6	
4	16	20'6	
4	74	20'2	
4	168	3'3	
4	8	2'0	
Total No 4			5750
Total Reinf Stl			6253

CONCRETE	
Class 'C' in Superstructure	
Pour #1	13.2 Cy
Pour #2	44.6 Cy
Pour #3	39.6 Cy
Total Conc. Class 'C'	97.4 Cy

SUPERSTRUCTURE DETAILS
INDIANA STATE HIGHWAY COMMISSION

SCALE: As Noted DATE: January 9, 1981

SUBMITTED FOR APPROVAL: *Walter M. Deam*

DRAWING: R4 OF 5 SHEET: 6 OF 23

PROJECT: SR 3234 (3)

CONTRACT NO. B-13965

BRIDGE FILE: 26-34-3105A

DESIGNED: CKD
DRAWN: CKD
TRACED: CKD

- A. Includes Removal of Railing, Curb, Portions of Spandrel Walls, and Corner of Wingwalls
- B. Estimated Quantity
- C. Includes Partial Removal of Bituminous Pavement and Underlying Material as Req'd. for Construction of New Slabs.
- D. Fill for Shoulder Corners
- E. Estimated Quantity - 3675 sff. See the Special Provisions.
- F. See the Special Provisions
- H. Guard Rail and End Treatments obtained from guard rail removal are to remain the property of the state.

SUMMARY

CODE	DESCRIPTION	UNIT	QUANTITY
E	Surface Seal	LSUM	1
51002	Concrete Class 'C' in Superstructure	CY	97.4
51032	Epoxy Coated Reinforcing Steel	LB	6253
51120	Railing Type 5-A	LF	154
A	51328 Removal of Present Structure (Portions)	LS	1
B	51670 Repointing Masonry in Structure	SF	150
	51885 Expansion Joint Type BS-6	LF	73
F	Concrete Scarification	SY	160
	52530 Guard Rail Type G	LF	404
	Guard Rail End Treatment Type I	Ea.	4
H	52535 Removal of Guard Rail	LF	560
	52470 Bituminous Mixture for Approaches	Tons	502
	52456 Bituminous Material for Tack Coat	SY	1024
C	Removal of Bituminous Surface	SY	238
D	52245 Borrow	CY	120
	52340 Construction Signs (Type A)	Ea.	14
	52345 Construction Signs (Type B)	Ea.	2
	52346 Standard Barricade Type III-A	Ea.	2
	Mulched Seeding "RU"	Sqs.	202
	06713 Line Solid White 4"	LF	922
	06714 Line Solid Yellow 4"	LF	834
	Line Skip Yellow 4"	LF	255

SUMMARY INDIANA STATE HIGHWAY COMMISSION

SCALE: As Noted DATE: January 9, 1981
 SUBMITTED FOR APPROVAL: *Walter M. Beam*
 DRAWING: RS OF 5 SHEET: 7 OF 23
 PROJECT: SR 3234(3)
 CONTRACT NO. 8-5965
 BRIDGE FILE: 26-34-3105A

BRUNING 40-5253 24139-3

DESIGNED: C/K/D
 DRAWN: C/K/D
 TRACED: C/K/D

Rev. 3-23-83 Guard Rail Type G; Add Guard Rail Removal
 Rev. 1-31-83: Add Notes 'E', 'F', and Mulched Seeding 'RU'
 52530, Add "Surface Seal" LSUM; Delete "Surface Seal" Sff.

END STR